

Printing Non-English characters using SAPScript with ITF Upload Method to Sato Printers

User Guide

Version 061031-04

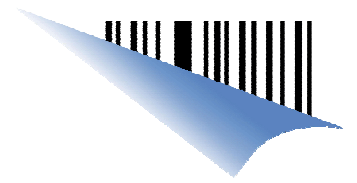
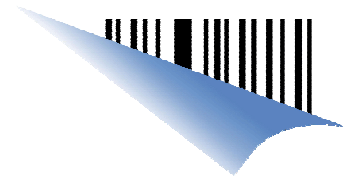


Table of Contents

1.	Introduction.....	3
2.	Configuration at SAP environment.....	3
3.	Using SATO firmware with Non-English Characters Cartridge	5
4.	Example.....	6
5.	Appendix	10
5.1.	Command Specification	10
5.2.	Built-in Font for separate cartridge	11



1. Introduction

This document is to explain how to print Non-English from SAP with SAPScript (ITF file upload method) to Sato **GT4xxe** printers. The printing procedure of the following languages will be explained:

- Traditional Chinese, Big 5
- Simplified Chinese, GB2312
- Korean, KSC5601

Please refer to the following document on how to use Label Gallery to create the ITF file:
<http://satoworldwide.com/labelgallery/downloads/WhitePapers/SAP%20guidelines.pdf>

Note:

- 1) It is assumed the Non-English characters are entered on the Text Editor or read from database in the SAP environment. Label Gallery is not able to create ITF file containing Chinese characters.
- 2) It is also assumed that the SAP system is Unicode Compliant, or at least supports inputting and displaying of the required Non-English characters.

2. Configuration at SAP environment

The SATO device type "ZLB_SAT.pri" is using codepage 1103 (IBM PC Multilingual 850). This codepage is not able to support Non-English character set.

Codepage **8300**, Traditional Chinese (based on Big5, MS CP950) has to be used in order to print the Traditional Chinese characters.

Codepage **8400**, Simplified Chinese (based on GB2312-EUC, MS CP936) has to be used in order to print the Simplified Chinese character.

Codepage **8500**, Korean (based on KSC5601-1992, MS CP949) has to be used in order to print the Korean characters.

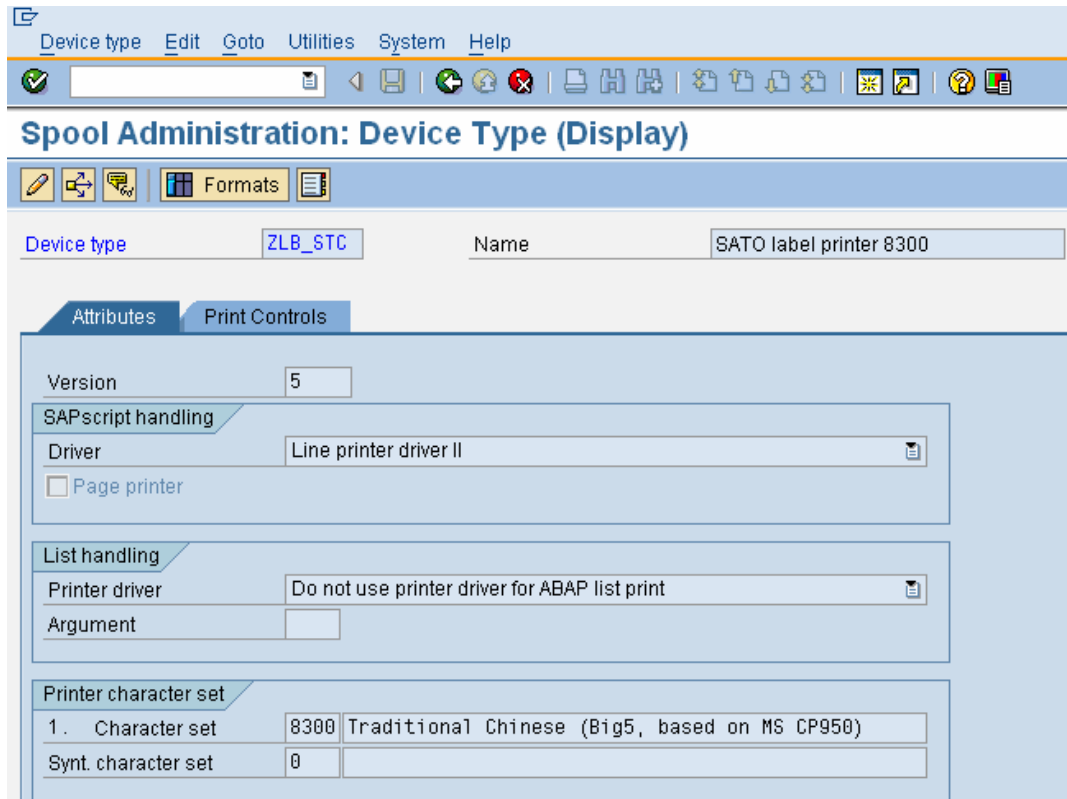
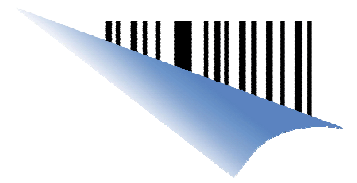


Figure 1 Using 8300 character set for Traditional Chinese

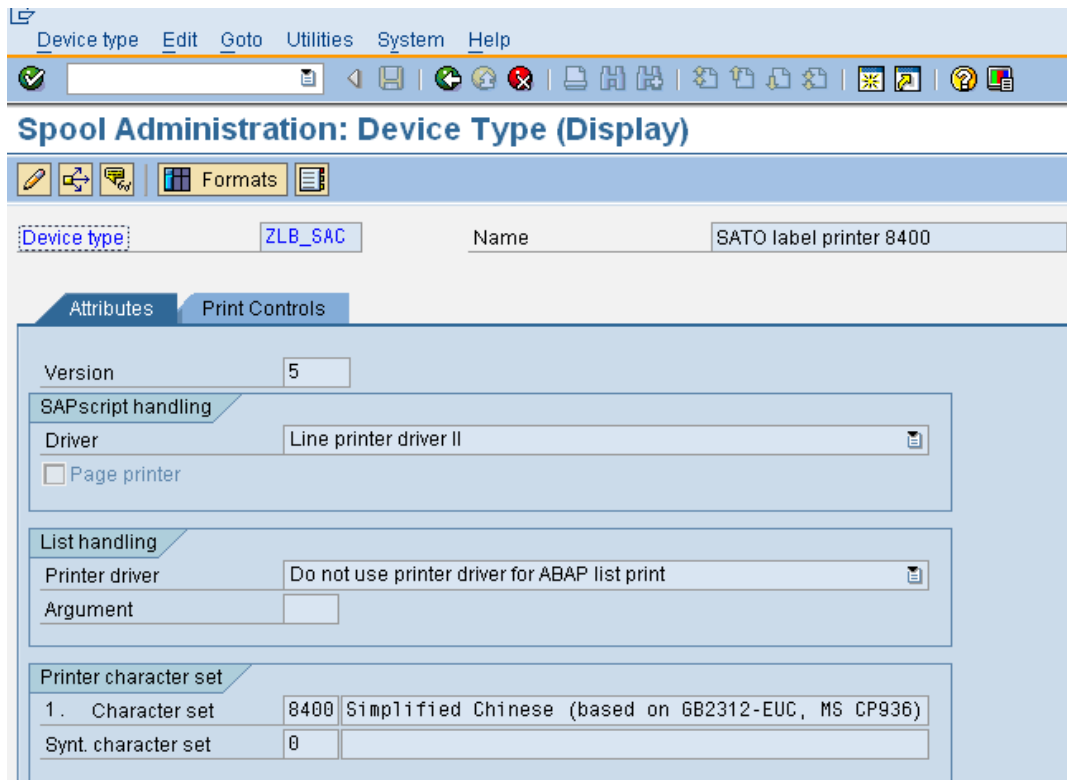


Figure 2 Using 8400 character set for Simplified Chinese

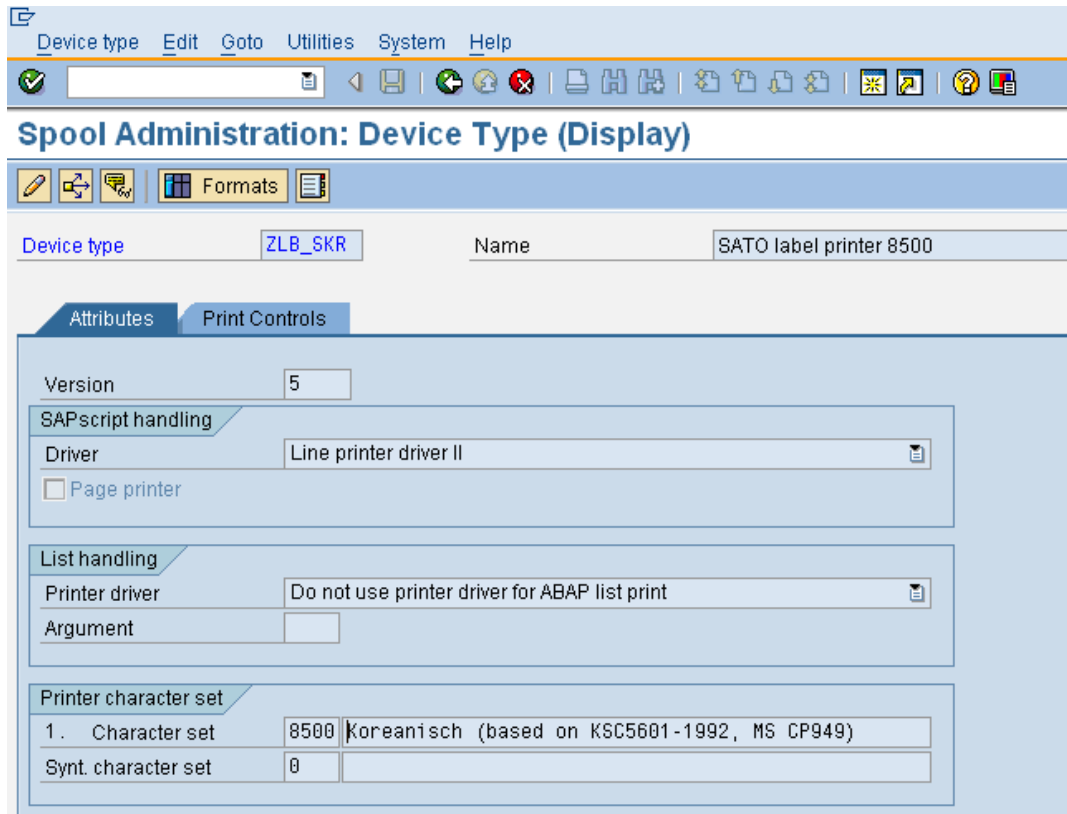
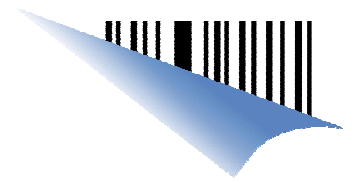


Figure 3 Using 8500 character set for Korean

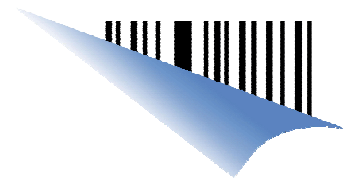
3. Using SATO firmware with Non-English Characters Cartridge

The following firmware has to be downloaded to the GT4xe printer in order to print the Non-English characters:

Firmware version 13.00.00.0Y8 (updated 27-Dec-2006)

Please refer to the appendix for the detail description of the commands.

Note: The latest version of firmware (13.00.00.0Y8Z) supports printing of True Type Font print command <ESC>RD, where both 1 byte data and 2 bytes True Type Font in the memory cartridge can be printed. The correct cartridge font (Y8) must be used for this firmware in order to print out the desired characters.



4. Example

Please find the command specifications from the appendix.

```

Change Standard text: ZTESTING_CHINESE_TRADITIONAL Lai
Insert Line Format Page
.....+.....1.....+.....2.....+.....3.....+.....4.....+.....5.....+.....6.....+.....7.....
* {
/ ^^EX0
/ ^AR^A3H001V001
/ ^CS3^#E4
/ ^A111590799^Z
/ }
/ {
* ^A
* ^V100^H025^Rdc00,P15,P15, 萬家客戶成功導入的經驗。
* ^V200^H025^Rdc00,P15,P15, 全球運籌效益1234
/ ^V300^H025^Rdc00,P15,P15, 繁體中文abcd
* ^V400^H025^Rdc00,P15,P15, 溝通平台無障礙ABCD
* ^V500^H025^Rdc00,P15,P15,Printing Traditional Chinese
* ^V550^H025^Rdc00,P15,P15,(Big5) using Rdc command
* ^Q1
* ^Z
/ }
/ {
/ ^^/01^~A0^Q1^Z
/ }

```

Table 1 ITF file with Traditional Chinese

Note: Parameter “c” has to be used for the Traditional Chinese.

Using the above mentioned device type (with codepage 8300) and the SATO firmware with Big5 character set, the following printout can be produced.

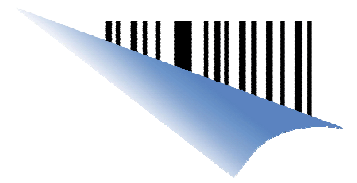


Figure 4 Printing output with Traditional Chinese

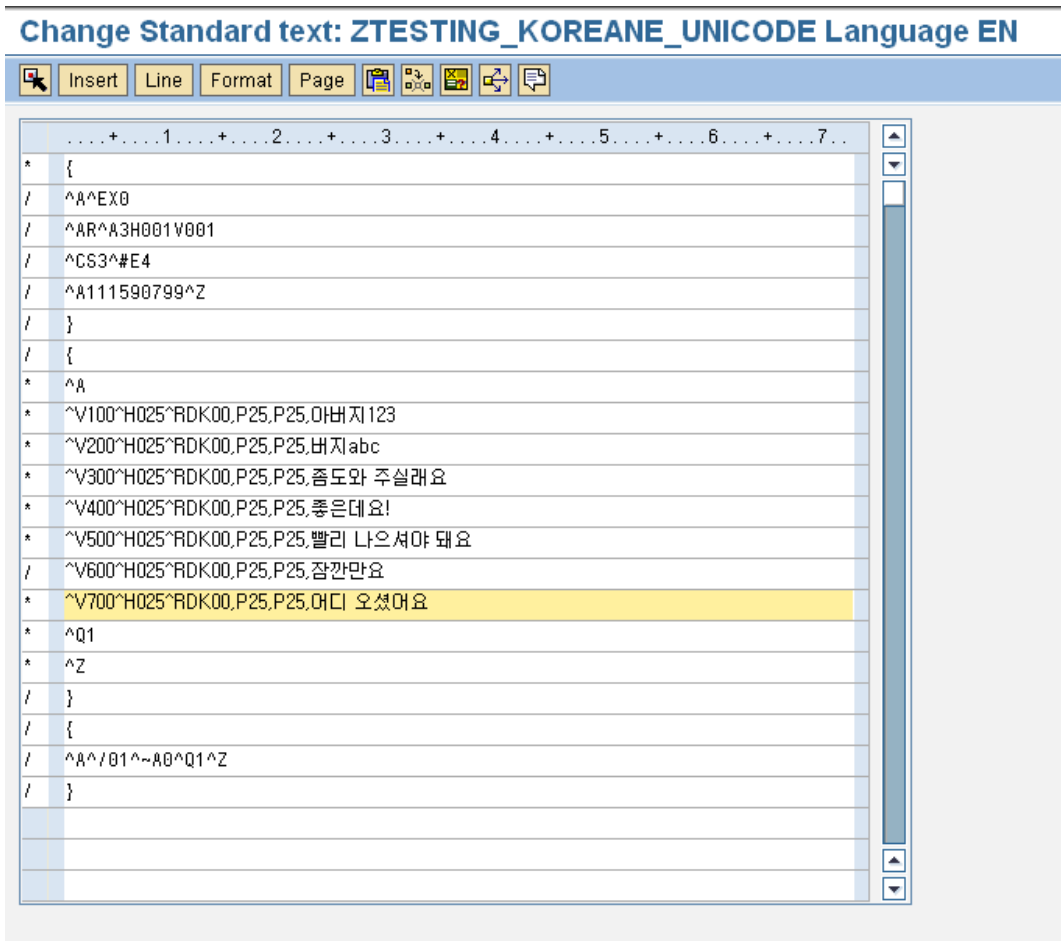
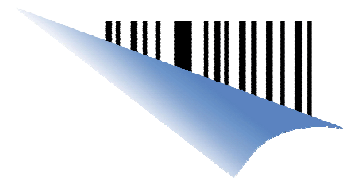


Figure 5 ITF file with Korea characters

Note: Parameter “K” has to be used for the Korean characters.

Using the above mentioned device type (with codepage 8500) and the SATO firmware with KSC5601 (HYRGoThic Medium) character set, the following printout can be produced.

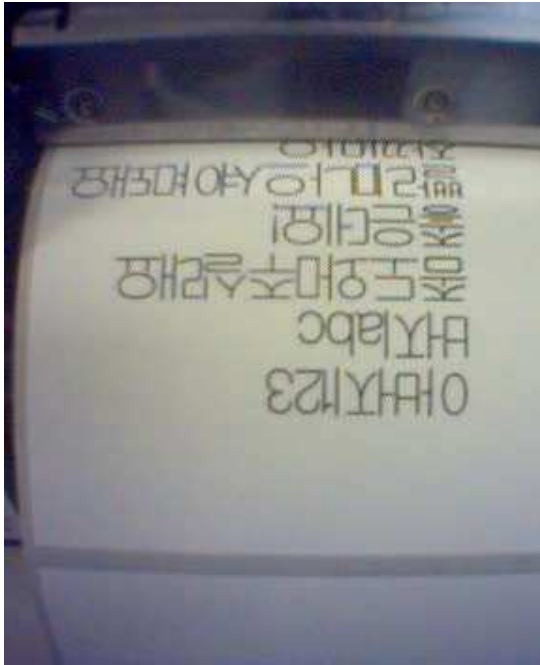
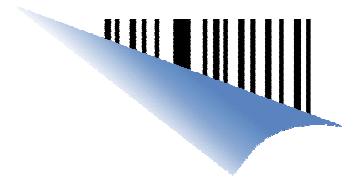
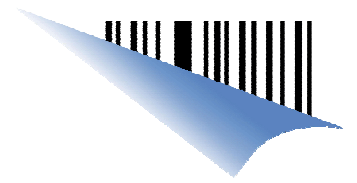


Figure 6 Print output with Korean characters



5. Appendix

5.1. Command Specification

【Format】

<RD> a b c, d d d, e e e, n ~ n

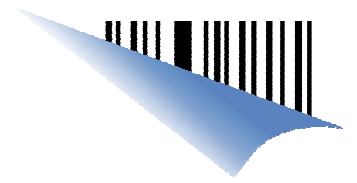
• Parameter

a	「Font type」	=	C	「MKaiSO-Medium-U(simplified)」
			c	「MHeiS-Bold-U(simplified)」
			K	「HYGungSo-Bold」
			T	「AngsanaUPC」
			F	「FuturaIBcok」
			P	「CG Palacio」
			S	「CG Century Schoolbook」
			G	「CG Triumvirate Condensed」
			V	「Univers Medium」
			t	「CG Times」
b	「Character set」	=	0	w/out specifying character set
			1	「Latin1」 ISO 8859/1 Latin 1
			2	「Latin2」 ISO 8859/2 Latin 2
			3	「Latin5」 ISO 8859/9 Latin 5
			4	「Grk」 CP-737 DOSGreek
			5	「Cyr」 CP-855 DOSCyrillic
			6	「Arb」 CP-864 DOSArabic
			7	「Codepage874」 CP-874 Thai
			8	「CP-850」 CP-850 Multilingual
c	「character style」	=	0	「standard」 Medium
d	「horizontal size」	=	0 0 4 ~ 9 9 9 (dot) / P 0 2 ~ P 9 9 (point)	
e	「vertical size」	=	0 0 4 ~ 9 9 9 (dot) / P 0 2 ~ P 9 9 (point)	
n	「print data」	=	data	

NOTE:

With effect from version 13.00.00.0Y9Z, user can now print 1-byte data with 2-byte standard cartridge fonts using <RD>c & <RD>K.

<RD>C commands will not available for printing data containing both 1-byte and 2-byte data. However, it can still be used to print the standard 2-byte font data.



5.2. Built-in Font for separate cartridge

TrueType font, outline font and setting value that is integrated in every cartridge is shown in table below.

① English cartridge

No.	Font style	Font ID No.	Font type	Style code	Character set	Data file name
1	FuturaIIBook	01	F	10	CP-850	EVL91810.TTF
2	CG Triumvirate Condensed	02	G	10	CP-850	EVL92246.TTF
3	CG Palacio	03	P	10	CP-850	EVL92532.TTF
4	CG Century Schoolbook	04	S	10	CP-850	EVL92546.TTF
5	Univers Medium	05	V	10	CP-850	EVL94021.TTF
6	CG Times	06	t	20	Latin1/2/5,Grk,Cyr,Arb	EVL_UCGT.TTF
7	Univers Medium	07	V	20	Latin1/2/5,Grk,Cyr	EVL_UUNL.TTF

② European cartridge

No.	Font style	Font ID No.	Font type	Style code	Character set	Data file name
1	Univers Medium	01	V	10	CP-850	EVL94021.TTF
2	CG Times	02	t	20	Latin1/2/5,Grk,Cyr,Arb	EVL_UCGT.TTF
3	Univers Medium	03	V	20	Latin1/2/5,Grk,Cyr	EVL_UUNL.TTF

③ Arabic cartridge

No.	Font style	Font ID No.	Font type	Style code	Character set	Data file name
1	CG Times	01	t	20	Latin1/2/5,Grk,Cyr,Arb	EVL_UCGT.TTF

④ Thai cartridge

No.	Font style	Font ID No.	Font type	Style code	Character set	Data file name
1	AngsanaUPC	01	T	20	Code page874	EVLANGSA.TTF

⑤ Chinese cartridge

No.	Font style	Font ID No.	Font type	Style code	Character set	Data file name
1	MKaiSO-Medium-U(simplified)	01	C	00	GB2312(GL)	MKAISOMU.TTF
2	MHeiS-Bold-U(traditional)	02	c	00	Big5	MHSBU1.TTF

⑥ Korean cartridge

No.	Font style	Font ID No.	Font type	Style code	Character set	Data file name
1	HYGungSo-Bold	01	K	00	KSC5601	H2GSRB.TTF

⑦ Japanese cartridge

No.	Font style	Font ID No.	Font type	Style code	Character set	Data file name
1	Outline Kanji	01	K	00	JIS/SJIS	OLKanji.of

** END **